

## The Gorilla Mighty All Purpose Ladder



## Table of Contents

1. Introduction to Gorilla Mighty
2. Care & Caution when using Gorilla Mighty
3. Adjusting Gorilla Mighty
4. Adjusting Gorilla Mighty - Continued
5. The 6 shapes of Gorilla Mighty
6. The 6 shapes of Gorilla Mighty - Continued
7. The 6 shapes of Gorilla Mighty - Continued
8. The 6 shapes of Gorilla Mighty - Continued
9. The 6 shapes of Gorilla Mighty - Continued
10. Maintenance of Gorilla Mighty

## **Instruction Booklet**



**“The All Purpose Ladder System”**

## 1. Gorilla Mighty All-Purpose Folding Extension Ladder

Congratulations on your purchase of the Gorilla Mighty ladder system. The Gorilla Mighty is a revolution in aluminium multi-purpose ladders. It's design is so advanced that it is actually an all-purpose ladder which performs the task of 6 different ladders in 1.

The secret to the Gorilla Mighty's amazing versatility is the revolutionary combination of the locking hinge and the extendable legs.

The locking hinge allows the ladder to be closed (for storage), open in the a-frame position, and open to 180° to use as a step ladder and extension ladder. The extendable legs allow the height and length of the ladder to be adjusted to 5 lengths, in 300mm increments.



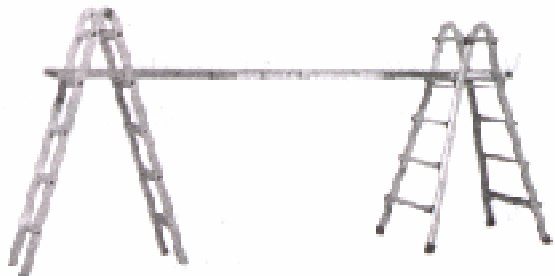
Step & Ext. Ladder



A-Frame Ladder



Stair Climber



Scaffold System

## 2. Care and Caution when using the Gorilla Mighty

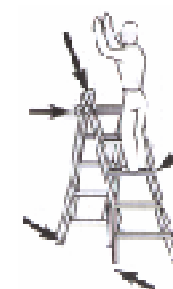
The Gorilla Mighty provides you with an extremely versatile and robust ladder, capable of giving you years of trouble free operation. It is always important to use the ladder in accordance with the directions provided within this booklet.

Most state authorities maintain regulations regarding the use of ladders, ensure you use your Gorilla Mighty within these regulations. Contact your state authority for details.

It is always important to use common sense when working at heights. It is easy to lose balance, step off a scaffold or over-reach when using ladders. It is important to be wary of performing any tasks that will contribute to these situations.



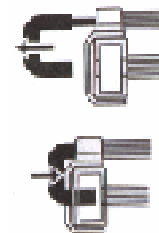
Failure to follow directions can result in death or serious injury.



Lock all hinges, extendable legs and flared legs must be at base. Do not stand above this step.



Place extension ladder at 75° to wall.



Ensure extendable leg locks are locked.

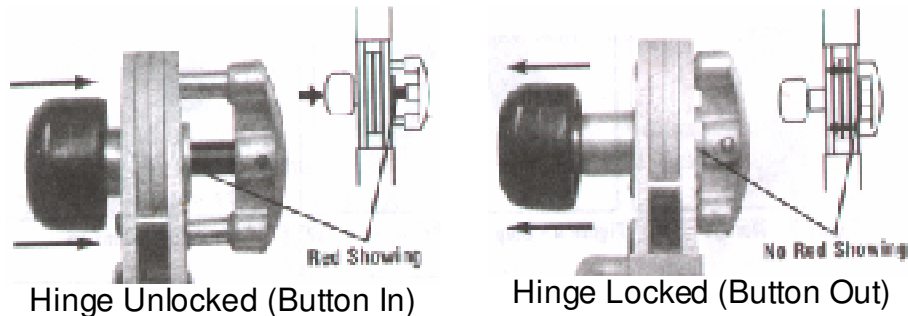


Always use the trestle adaptors provided when using as a trestle.

### 3. Adjusting the Gorilla Mighty

#### a) The Locking Hinge

The locking hinge allows the Gorilla Mighty to form the 3 basic shapes : Closed, A-Frame and Extension Ladder. The locking hinge is designed to snap into each locked position, as you move the Gorilla Mighty from one shape to another.



#### To Unlock the Locking Hinge

1. Press in on the black palm buttons until the red is showing on the inner indicator shaft. The ladder is now ready to 'swing' to its next position. Swing the ladder to the next position, until you hear the locking hinges 'snap' shut. To determine whether the locking hinges have both snapped shut correctly, check to see that no red is showing on the inner indicator shaft.

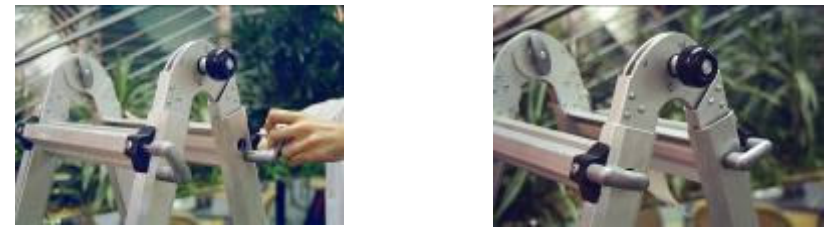
Your Gorilla Mighty is now ready to use in its new form.

**Note :** Never force the locking hinges with tools or levers. The locking hinges will only lock in the allowable positions. If the locking hinges fail to lock, or have become 'sticky' or 'tight' see the section on Maintenance, or call your place of purchase.

### 3. Adjusting the Gorilla Mighty

#### b) The Extendable Legs

Each of the two extendable legs on the Gorilla Mighty can be adjusted individually, to form the most appropriate shape for the job you are performing. Each leg has 2 locking mechanisms which hold the legs in the position you select.



Locking Mechanisms Unlocked      Locking Mechanisms Locked

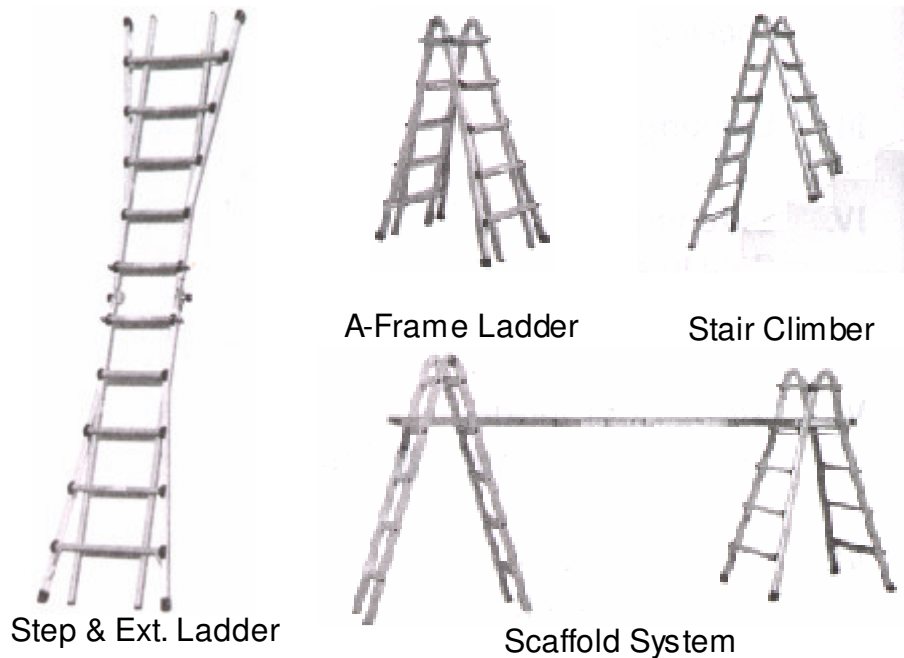
#### To Adjust the Extendable Legs

1. Unlock the locking mechanisms on both the left and right side of the extendable leg you wish to change.
2. Slide the extendable leg to the desired length.
3. Align the leg to one of the five sets of locking holes, and relock the locking mechanisms on both the left & right side.
4. Perform the same procedure to the other extendable leg, if required.

**Note :** It is vitally important to ensure that all locking mechanisms are fully engaged before using Gorilla Mighty. The locking mechanisms will only engage in allowable positions. If locking mechanisms fail to lock, or have become 'sticky' see the Maintenance section.

#### 4. The 6 shapes of Gorilla Mighty

As noted previously, the Gorilla Mighty can be used in 6 different configurations.

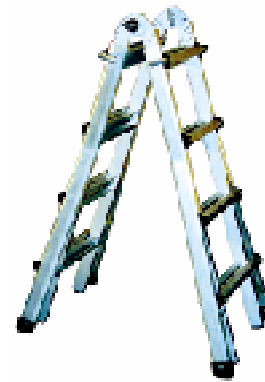


The following section outlines each of these, and how to transform the Gorilla Mighty into each of these shapes.

**Note :** The instructions always assume that Gorilla Mighty starts in it's closed, storage position.

#### 4. The 6 shapes of Gorilla Mighty

##### a) Standard A-Frame



1. Press in on the black palm buttons to release the locking hinges.
2. Swing the Gorilla Mighty apart until the locking hinges 'snap' into position.
3. You now have a double-sided A-Frame ladder.

##### b) Tall A-Frame

1. Press in on the black palm buttons to release the locking hinges.
2. Swing the Gorilla Mighty apart until the locking hinges 'snap' into position.
3. You now have a double-sided A-Frame ladder
4. Unlock the locking mechanisms on each of the extendable legs.
5. Extend each leg to the desired height, and re-lock the locking mechanisms.
6. You now have a double-sided tall A-Frame ladder.



#### 4. The 6 shapes of Gorilla Mighty

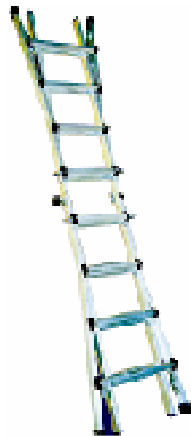
##### c) Off-Centre A-Frame (Stair Climber)



1. Press in on the black palm buttons to release the locking hinges.
2. Swing the Gorilla Mighty apart until the locking hinges 'snap' into position.
3. You now have a double-sided A-Frame ladder.
4. Unlock the locking mechanisms on one of the extendable legs.
5. Extend leg to the desired height, and re-lock the locking mechanisms.
6. After extending one leg only, you now have an Off-Centre double-sided A-Frame ladder.

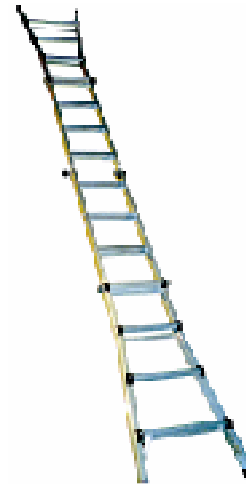
##### d) Step Ladder

1. Press in on the black palm buttons to release the locking hinges.
2. Swing the Gorilla Mighty apart until the locking hinges 'snap' into position.
3. Press in again on the black palm buttons to release the locking hinges.
4. Swing the Gorilla Mighty around until the locking hinges 'snap' into position.



5. Your Gorilla Mighty is now a step ladder.

##### e) Extension Ladder



1. Press in on the black palm buttons to release the locking hinges.
2. Swing the Gorilla Mighty apart until the locking hinges 'snap' into position.
3. Press in again on the black palm buttons to release the locking hinges.
4. Swing the Gorilla Mighty around until the locking hinges 'snap' into position.
5. Your Gorilla Mighty is now a step ladder.
4. Unlock the locking mechanisms on each of the extendable legs.
5. Extend each leg to the desired height, and re-lock the locking mechanisms.
6. You now have an extension ladder.

## f) Trestle System



1. Unlock all 4 locking mechanisms on the extendable legs, and completely remove the centre section of the ladder from the extendable legs. You will now have the centre section, and 2 leg sections.
2. Press in on the black palm button to release the locking hinges.
3. Swing the Gorilla Mighty (centre section) apart until the locking hinges 'snap' into position.

This piece forms one side of the trestle system.

4. Taking the trestle adapter pieces (supplied in with your Gorilla Mighty) connect both extendable leg section together, and lock all 4 locking mechanisms.

This piece forms the other side of the trestle system.

5. Position your trestles so that at least 300mm of plank extends past the end of each trestle.

**Note :** Never place your plank on the top step of Gorilla Mighty, and always ensure that the maximum load of 150kg is never exceeded.

## 5. Maintenance of your Gorilla Mighty Ladder

The design of your Gorilla Mighty Ladder ensures that you will have a lifetime of trouble free operation, provided a few simple maintenance procedures are performed, periodically.

1. To ensure smooth operation, lubricate the locking hinges and extendable leg locking mechanisms each 6 months with a light spray oil, and prior to long term storage. This should be performed more often if used regularly, or as often as you feel is necessary. WD40 works well.
2. Always store the ladder in a dry location.
3. Keep the rails of the extendable legs clean, so they slide easily over the inner section.
4. Keep locking hinge mechanisms free of dirt, salt spray, paint, or other contaminants that could prevent proper operation.
5. Check all components to be sure they work correctly.